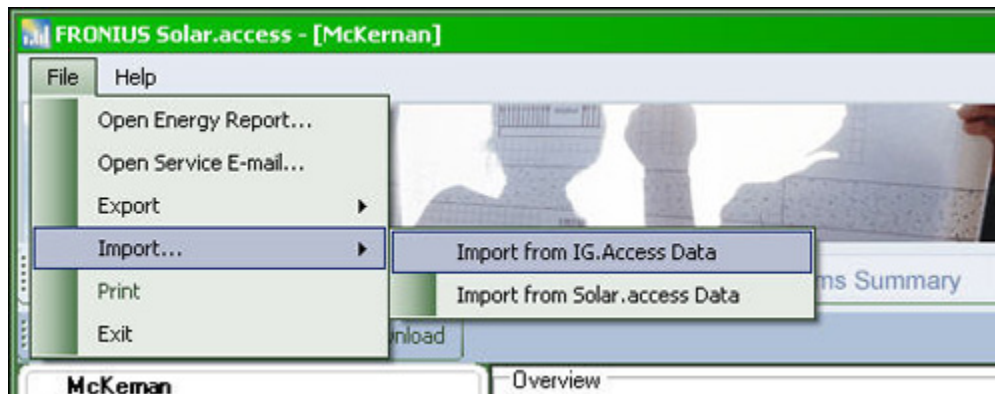


Solar.Access update for Spring

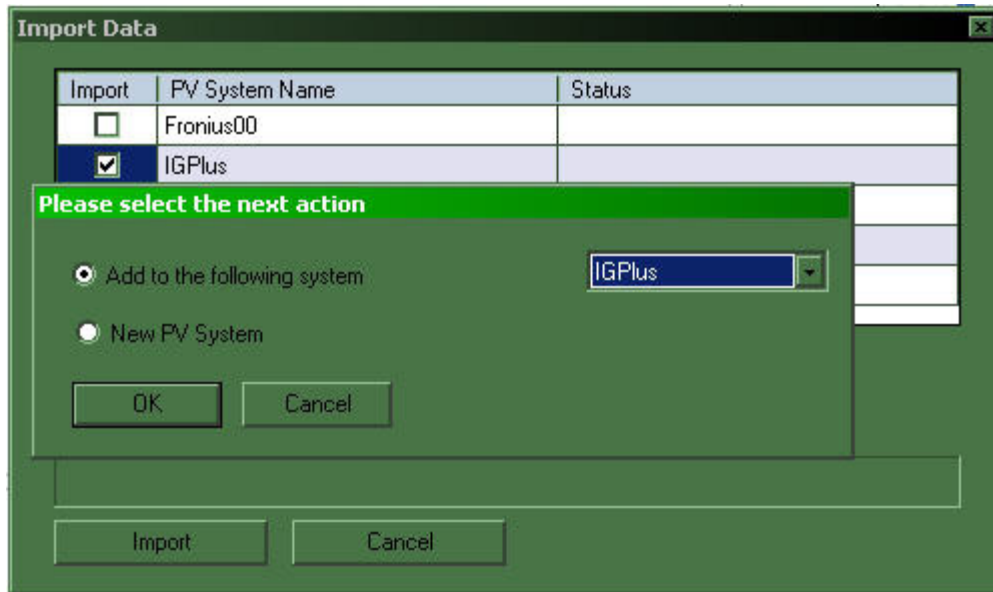
By Tim McKernan, Fronius Applications Engineer

Spring is a great time for new beginnings and to update to the NEW *Solar.Access* software for your personal monitoring solution. The recommended computer specs are: Windows XP, a Pentium 4 with 1.3Ghz and 1024 Mb of Ram. *Solar.Access* features an updated GUI and increased web-based monitoring. Some customers may be wary of installing the new software because they believe it means that they will lose all the information they have stored in *IG.Access*. The purpose of this article is to explain how to bring that archived data from *IG.Access* into *Solar.Access*.

Once you have *Solar.Access* installed and a PV System created, it is an easy process to import archived *IG.Access* data. Click on **File** into the upper right corner. Choose **Import** then **Import from IG.Access Data** **Data**.



The computer will need help finding a specific file called "Anlagen.dat". You can find this file by running a search on your computer for it or, if you installed in the default directory, it will be here: C:\Program Files\Fronius Austria\IG.Access\Data. Once you find the file it will ask you which system you want to import from if you have multiple systems in *IG.Access*. Select which system you want to import from then choose which system you want to import to or if you want to create a new system for this data in *Solar.Access*.



Click **OK** and then **Import** and an automated process will finish the work for you. This process may take some time if you have a large archive of data from *IG.Access*. Once the process is complete, you are fully integrated into *Solar.Access*.

➤ [Visit our web site to download the *Solar.Access* software](#)