



TPS/i Manual Series

/ decoding the DNA of the arc

TPS/i Series of
manual welding inverters



TPS/i – the Intelligent Welding Solution

- / Increase your productivity with new, advanced processes
- / Program welding parameters easily with the intuitive touch screen
- / Achieve quality welds – consistently – through the intelligent arc

In our quest to decode the DNA of the arc, we have learned how to solve some of the most complex welding challenges. In order to share these solutions with you, we've developed TPS/i.

Welcome to the future of welding.



Learn more



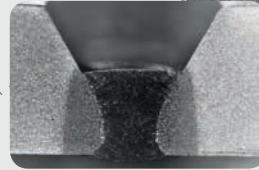
tps-i.com/en

MANUAL WELDING AS IT SHOULD BE



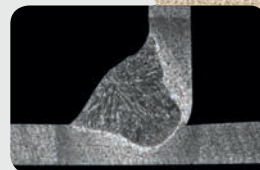
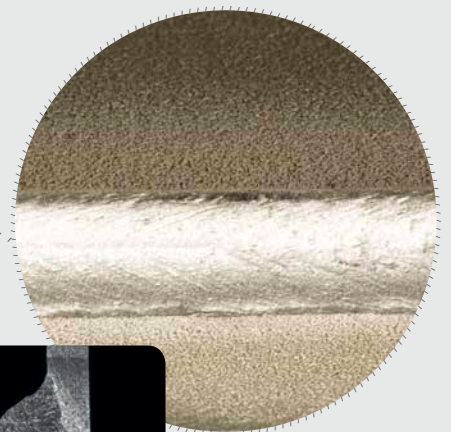
TPS/i was built with the future in mind. Each new system is configured for the applications you use today and can be expanded as your business changes. Upgrades are easy, and most often can be done without a technician or specialized hardware. This modular concept ensures your machine is state-of-the-art for years to come.

Low Spatter Control (LSC) is a revolutionary process that provides high deposition rates with low spatter. The TPS/i completely controls the arc through high speed communications to provide perfect results.



We've overcome many of the challenges of a multi-purpose machine with our specialized processes such as the Penetration Stabilizer and Arc Length Stabilizer. Each process is designed to maintain the perfect arc for the chosen application, especially when welding difficult joints and positions.

Pulse Multi Control (PMC) has redefined pulse welding. The TPS/i system keeps the arc length shorter for increased stability, deeper penetration and reduced heat input.





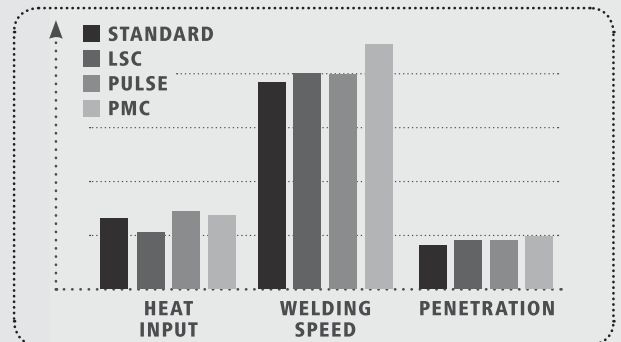
Responsive and accurate wire feeding ensures that welding processes perform accurately. Color-coded drive rolls and guide nozzles make loading the proper consumables worry free.



Touch screen controls make many aspects of welding easier. From learning to use the system to making parameter changes on the fly, everything can be accomplished without removing your gloves.



We've successfully merged high-tech computing with welding to create our intelligent welding system. This power source utilizes high speed communications to adapt the arc to minute changes during application.



Laboratory tests show an increase in performance over conventional processes.

Complete welding packages

All packages are air-cooled and ready to weld. Non-aluminum packages include the power supply listed, wire feeder, carriage, 11.5ft (3.5m) push torch, 13.1ft (4m) ground cable, and full consumables for .045 wire. Aluminum packages include all of the same items plus a push-pull torch, instead of the standard torch.

Material	TPS 270i	TPS 320i C	TPS 400i	TPS 400i LSC Adv.	TPS 500i	TPS 600i
Steel	S14859	S14864	S14879	S14884	S14888	S14892
Stainless Steel	S14860	S14865	S14880	S14885	S14889	S14893
Aluminum	S14861	S14866	S14881	S14886	S14890	S14895
Flux Core	S14862	S14867	S14883	S14887	S14891	S14896
Metal Core	S14859	S14864	S14879	S14884	S14888	S14892
Wire Diameter <input type="checkbox"/> .025 <input type="checkbox"/> .030 <input type="checkbox"/> .035 <input type="checkbox"/> .040 <input type="checkbox"/> .045 <input type="checkbox"/> .052 <input type="checkbox"/> 1/16 <input type="checkbox"/> Other						
Torch options: <input type="checkbox"/> 11.5ft (3.5m) <input type="checkbox"/> 14.8ft (4.5m) <input type="checkbox"/> Custom length <input type="checkbox"/> 15° bend <input type="checkbox"/> 30° bend <input type="checkbox"/> 45° bend <input type="checkbox"/> 60° bend <input type="checkbox"/> Custom bend						
Additional options: <input type="checkbox"/> Water-Cooled <input type="checkbox"/> LSC Process <input type="checkbox"/> PMC Process <input type="checkbox"/> Job Master Torch <input type="checkbox"/> Up/Down Torch <input type="checkbox"/> Cart <input type="checkbox"/> Other						

Technical Data

	TPS 270i	TPS320i C	TPS 400i	TPS 400i LSC Adv.	TPS 500i	TPS 600i
Mains voltage	3 x 460	3 x 460	3 x 460	3 x 460	3 x 460	3 x 460
Mains range	342 - 529 Vac	342 - 529 Vac	323 - 529 Vac	323 - 529 Vac	342 - 529 Vac	342 - 529 Vac
Fuse protection	16A	35A Slow blow	35A Slow blow	35A Slow blow	35A Slow blow	35A Slow blow
Mains tolerance	-10% / 15%	-10% / 15%	+/- 15%	+/- 15%	-10% / 15%	-10% / 15%
MIG current range	3 - 270A	3 - 320A	3 - 400A	3 - 400A	3 - 500A	3 - 600A
MIG voltage range	14.2 - 27.5	14.2 - 30.0	14.2 - 34.0	14.2 - 34.0	14.2 - 39.0	14.2 - 44.0
Duty cycle 104°F (40°C)	270A @ 40%	320A @ 40%	400A @ 40%	400A @ 40%	500A @ 40%	40%
	220A @ 60%	260A @ 60%	360A @ 60%	360A @ 60%	430A @ 60%	600A @ 60%
	190A @ 100%	220A @ 100%	320A @ 100%	320A @ 100%	360A @ 100%	500A @ 100%
Degree of protection	IP 23	IP 23	IP 23	IP 23	IP 23	IP 23
Dimensions (LxWxH)*	27" x 10.9" x 17.5"	27.8" x 11.8" x 20.1"	27.8" x 11.8" x 20.1"	27.8" x 11.8" x 28.4"	27.8" x 11.8" x 20.1"	27.8" x 11.8" x 20.1"
(LxWxH mm)*	687 x 276 x 445	706 x 300 x 510	706 x 300 x 510	706 x 300 x 720	706 x 300 x 510	706 x 300 x 510
Weight*	71.7 lbs (32.5 kg)	78.9 lbs (34.7 kg)	77.6 lbs (35.2 kg)	119.9 lbs (54.4 kg)	80.9 lbs (36.7 kg)	103.6 lbs (47.0 kg)
*These values reflect the welding power supply only						

/ Perfect Welding / Solar Energy / Perfect Charging

THREE BUSINESS UNITS, ONE GOAL: TO SET THE STANDARD THROUGH TECHNOLOGICAL ADVANCEMENT.

What began in 1945 as a one-man operation now sets technological standards in the fields of welding technology, photovoltaics and battery charging. Today, the company has around 3,800 employees worldwide and 1,242 patents for product development show the innovative spirit within the company. Sustainable development means for us to implement environmentally relevant and social aspects equally with economic factors. Our goal has remained constant throughout: to be the innovation leader.

Further information about all Fronius products and our global sales partners and representatives can be found at www.fronius.com

v08 Aug 2017 EN

Fronius USA LLC

Headquarters
6797 Fronius Drive
Portage, IN 46368
United States
(877) Fronius (376-6487)
sales.usa@fronius.com
www.fronius.us

North East
10421 Citation Drive
Brighton, MI 48116
United States
(810) 844-2800
sales.northeast@fronius.com
www.fronius.us

South East
1271 N Holtzclaw Ave
Chattanooga, TN 37406
United States
(423) 697-1777
sales.southeast@fronius.com
www.fronius.us

South Central
8715 Fallbrook
Houston, Texas 77064
United States
(219) 734-5500
sales.southcentral@fronius.com
www.fronius.us

California
2900 Adams
Riverside, CA 92504
United States
(219) 734-5500
sales.california@fronius.com
www.fronius.us

