

MagicCleaner 150/300



Cleaning of Stainless CrNi-Steel

Different processes and the advantages of Magic Cleaning.

Cleaning processes

- Pickling
- Sand-blasting
- Grinding
- **Electrochemical cleaning**

Advantages of Magic Cleaning

- Economical cleaning of stainless steel surfaces
- Dosed electrolyte consumption
- Cleaning and passivating in one
- No subsequent passivation needed

MAGIC 
CLEANER

Applications of Electrochemical Cleaning

- Apparatus and plant construction
(Institutional kitchen, food industry and swimming pools)
- Portal construction
(Stair railings and Design elements)
- Maintenance and repair



Why Cleaning & Passivating is Important



Characteristics of stainless CrNi-steel

Why is it corrosion resistant?

Passivity of the metal surface

Chromium content above 12,5%
Carbon content below 1,2%

Formation of a thin,
corrosion-resistant layer



Stainless CrNi-steel & heat impact during welding

What happens during welding?

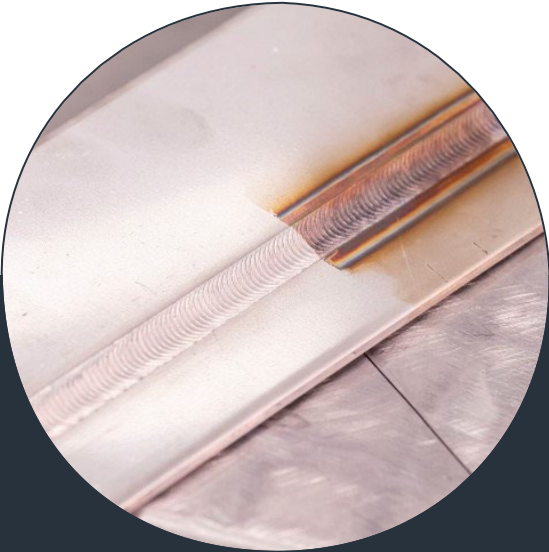
Passive layer will be destroyed

Tarnishing color prevents the
oxygen to reach the surface

Reduction of the corrosion
resistance of the material



3 Different Processes



Cleaning (AC-Current)

The electrochemical **cleaning** process uses AC-current and electrolyte liquid to remove tarnish after welding.



Polishing (DC-Current)

Electrochemical **polishing** is a process that removes part of the base material from the workpiece and brightens the weld seam.



Printing

For **marking** stainless steel permanently you need in addition:

- Printing foil
- Special electrolyte liquid

MagicCleaner 150

Highlights

- Light weight 4,5kg
- Ready to use in 2 steps

Existing certifications

CE, UKCA, UL/CSA, CCC, EAC, AUS/NZ

Small cleaning torch

- Manual electrolyte dosing
- Mountable 0,1 liter tube

Easy to use

- Select the right process
- Power adjustment

Housing

- Proven housing
- IP23-Protection

Torch holder

For easy pad mounting



MagicCleaning



MagicPolishing



MagicPrinting

MagicCleaner 300

Highlights

- Ready to use in 3 steps
- Integrated tank (1,8 liter)
- Torch with compressed air blowing system

Powerful cleaning torch

Integrated compressed air blowing system
(Patent)

Easy to use

- Select the right process
- Power adjustment
- Integrated tank (1,8 liter)
- Liquid pump (manual/automatic)

Inverter technology inside

- Weight reduction
- Energy saving

Housing

- Proven housing
- IP23-Protection



Existing certifications

CE, UKCA, UL/CSA, CCC, EAC, AUS/NZ



MagicCleaning



MagicPolishing

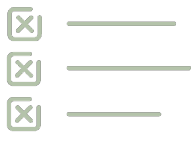


MagicPrinting

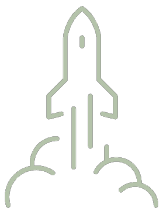
Product Benefits



Ready to use in max. 3 steps



3 processes are available



Inverter based cleaning technology



Technical Data

	Magic Cleaner 150	Magic Cleaner 300
Mains voltage -15 / +10%	230V / 50/60 Hz or 100 - 110V / 50-60 Hz	230V / 50/60 Hz or 100 - 110V / 50-60 Hz
Mains fuse	6,3 A	10 A
Maximum primary power	500 VA	1000 VA
Output current	0 - 15 A	0 - 30 A
Output voltage	0 - 30 V	0 - 30 V
Output power	450 W	900 W
Open circuit voltage	30 V	30 V
Liquid dosing rate	Manual	1 - 3,6 l/h
Liquid tank	100ml Tube	1,8 l
Protection class	IP 23	IP 23
Dimensions l x w x h	365 / 130 / 285 mm	558 / 210 / 369 mm
Weight	4,5 kg	14 kg

Main Differences

	NEW		OLD
	MagicCleaner 150	MagicCleaner 300	MagicCleaner standalone
Cleaning AC	x	x	x
Polishing DC	x	x	x
Printing (AC & DC)	x	x	x
Integrated pump		x	x
Output current	15A	30A	20A
Cleaning torch MC150	x	x	
Cleaning torch MC300		x	
Cleaning liquid (capacity)	100ml tube	1,8l	1,5l
ToolCase 60	x		
ToolCase 120		x	
Trolly available		x	

Variants in Detail



MagicCleaner 150

Mains plug EF	4,075,253
Mains plug CN	4,075,253,005
np - without mains plug	4,075,253,008

MagicCleaner 150 MultiVoltage

Mains plug B	4,075,253,631
np - without mains plug	4,075,253,638



MagicCleaner 300

Mains plug EF	4,075,254
Mains plug CN	4,075,254,005
np - without mains plug	4,075,254,008

MagicCleaner 300 MultiVoltage

Mains plug B	4,075,254,631
np - without mains plug	4,075,254,638

Overview Package MC 150



Torch holder MC150
42,0510,0601



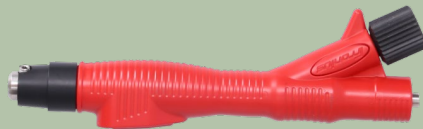
Adapter for brush 35x63mm
42,0510,0603



Ground cable 10mm² 3m
42,0510,0599



Current cable 2m
42,0510,0602



Cleaning torch MC150
42,0510,0600



Graphit-electrode 22mm
42,0510,0500



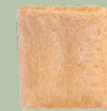
Graphit-electrode 10mm
42,0510,0506



Hex-wrench 2,5mm
42,0510,0376



Cleaning-/Polishing felt 22mm
42,0510,0501



Cleaning-/Polishing felt 10mm
42,0510,0507



Carbon brush MC150
42,0510,0510



Connection
part MC150
42,0510,0511

Overview Package MC 300



Torch holder
MC150
42,0510,0601



Adapter for
brush 35x63mm
42,0510,0603



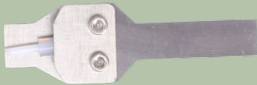
Carbon brush
MC150
42,0510,0510



Connection
part MC150
42,0510,0511



Graphit-electrode
22mm
42,0510,0500



Graphit-electrode
10mm
42,0510,0506



Cleaning torch
MC150
42,0510,0600



Cleaning-/Polishing
felt 22mm
42,0510,0501



Cleaning-/Polishing
felt 10mm
42,0510,0507



Current
cable 2m
42,0510,0602



Ground cable
10mm² 3m
42,0510,0599



Torch holder
MC300
42,0510,0651



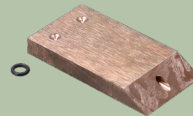
Hex-wrench
2,5mm
42,0510,0376



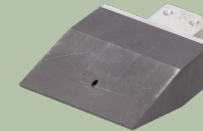
Carbon brush
small MC 300
42,0510,0529



Connection
part MC 300
42,0510,0531



Tungsten-electrode
22mm
42,0510,0520



Graphit-electrode
45mm
42,0510,0524



Mounting ring
19x23x10
42,0510,0514



Sealing ring
3x1mm
42,0510,0722



Fast Bond
Felt 22mm
42,0510,0521



Big bond felt
93x46
42,0510,0525



Mounting ring
36,81x3,53
42,0510,0532

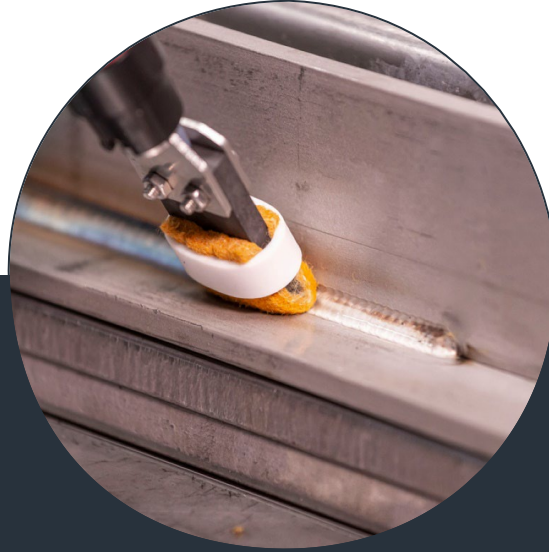
Torch Attachments



Graphite electrode

Using for linear movement:

- Linear welds
- Corner joints
- T-joints
- Butt welds



Tungsten electrode

Using for linear movement:

- Linear welds
- Corner joints
- T-joints
- Butt welds



Carbon fiber brush

Typical applications:

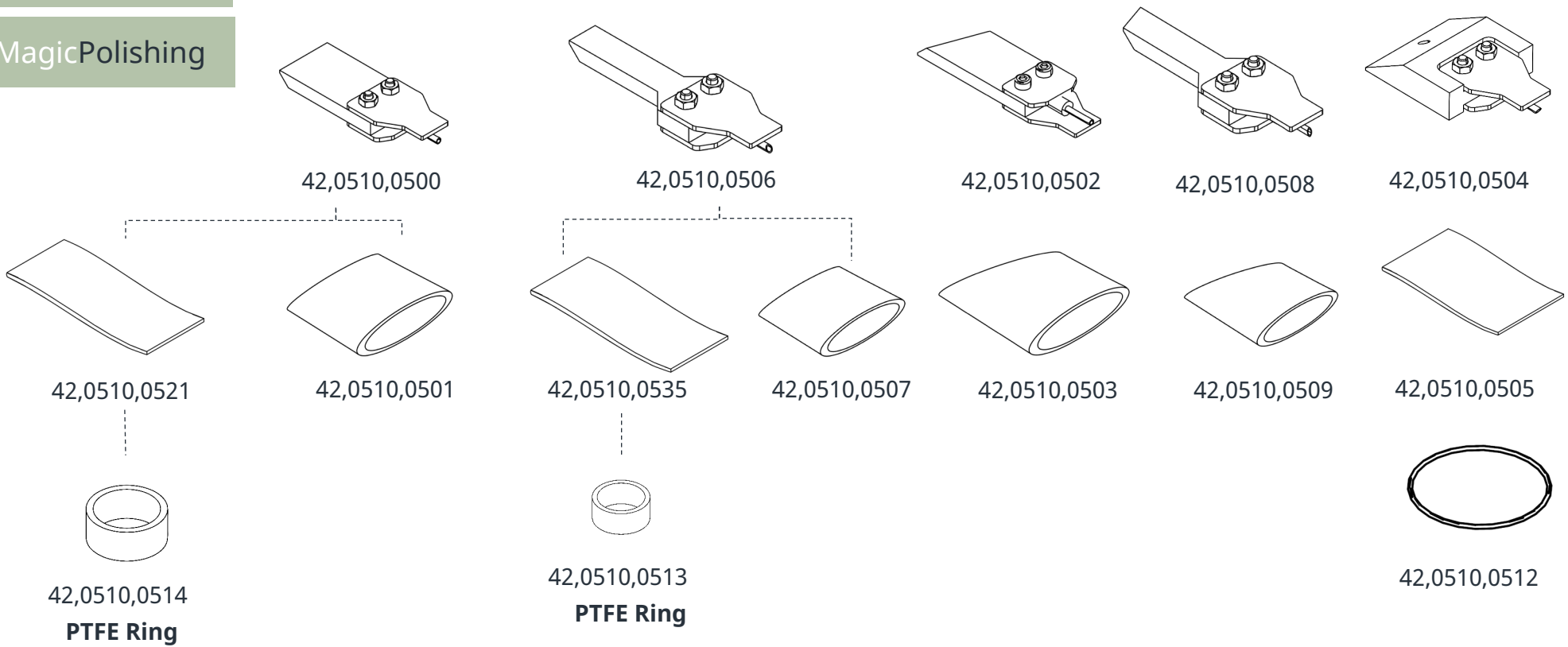
- Welded pipes,
- Undercuts,
- Very sharp corners
- Complex shapes

Cleaning Torch MC 150

 MagicCleaning

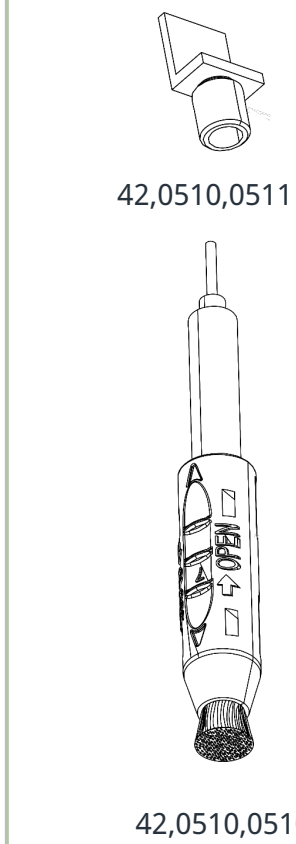
 MagicPolishing

 MagicCleaning



Accessories used to clean/polish small workpieces

Accessories used to clean/polish large workpieces

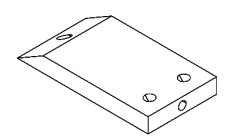


Carbon brush is used to clean **corners** or areas **difficult to reach** (tubes).

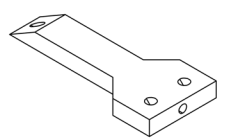
Cleaning Torch MC 300

 MagicCleaning

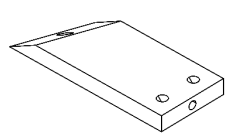
 MagicPolishing



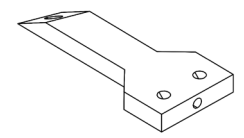
42,0510,0520



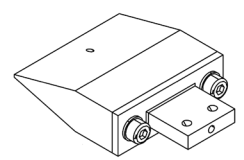
42,0510,0526



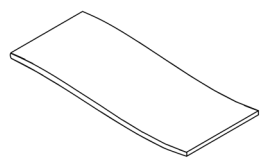
42,0510,0522



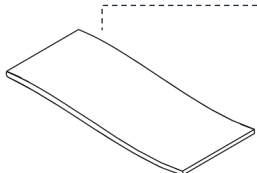
42,0510,0528



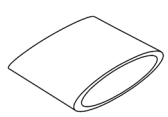
42,0510,0524



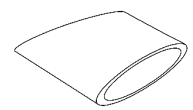
42,0510,0521



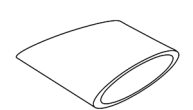
42,0510,0535



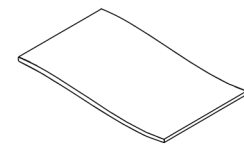
42,0510,0507



42,0510,0503



42,0510,0509



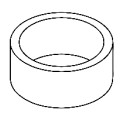
42,0510,0525



42,0510,0532

FAST BOND is mostly used pad. This pad is made with very resistant material. For both cleaning and polishing.

mostly used for **cleaning operations**.



42,0510,0514

PTFE Ring

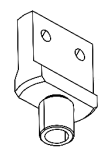


42,0510,0513

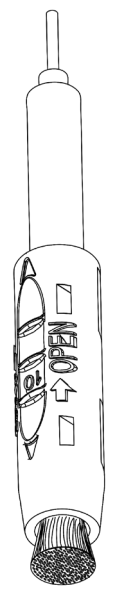
PTFE Ring

Accessories used to clean/polish **large workpieces**.

 MagicCleaning

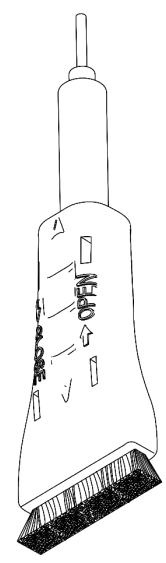


42,0510,0531



42,0510,0529

Carbon brush is used to clean **corners** or areas **difficult to reach** (tubes).



42,0510,0530

Flat Carbon brush is used to clean **large workpieces**.

Print Set (Optional)

For printing on stainless steel, the print set (42,0510,0540) is required:



Existing print foils can still be used – see pricelist



Overview Liquids

Cleaning/Polishing red



Using for:

- Intensive & highly demanding cleaning
- Fast cleaning
- Polishing

Classification:



Cleaning blue



Using for:

- Normal Cleaning operation
- Lower CLP classification
- Easier to store and transport

Classification:



Printing



Using for:

- Printing operation

Classification:

Printing white:



Printing black:



Neutralizer



Using for:

- Neutralizing the surface after electro-chemical process

Classification:

EU: -

USA:



MX,BRA,UK:



Overview Liquids

Cleaning/Polishing Liquids MagicCleaner 150

42,0510,0380 Cleaning/Polishing red 0,1L MC 150

42,0510,0381 Cleaning blue 0,1L MC 150

Cleaning/Polishing Liquids MagicCleaner 300

42,0510,0382 Cleaning/Polishing red 1,0L MC 300

42,0510,0384 Cleaning/Polishing red 5,0L MC 300

42,0510,0387 Cleaning blue 1,0L MC 300

42,0510,0388 Cleaning blue 5,0L MC 300

Neutralization MagicCleaner 150/300

42,0510,0385 Neutralizer 1,0L MC 150/300

42,0510,0386 Neutralizer 5,0L MC 150/300

Print Liquids MagicCleaner 150/300

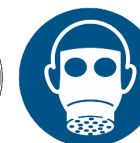
42,0510,0390 Print Electrolyte Black 0,1L

42,0510,0391 Print Electrolyte White 0,1L

More information you will find
in the safety datasheets ...



www.fronius.com/magiccleaner



Additional Equipment

MC 300

MC 150



4,077,019

TU Car 2 Easy



4,101,229

ToolBox 210



42,0510,0283

ToolCase 120



42,0510,0234

ToolCase 60

Option: 4,101,128 **OPT platform**

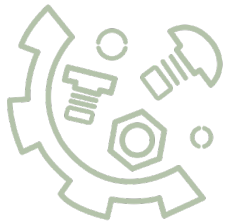
Easy – for additional working
height

Further Information ...



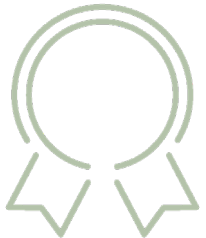
Landing page

www.fronius.com/magiccleaner



Spare part catalogue

<https://spareparts.fronius.com/>



Extend warranty

<https://warranty.fronius.com/>





All information is without guarantee in spite of careful editing – liability excluded.

Intellectual property and copyright: all rights reserved.
Copyright law and other laws protecting intellectual property apply to the content of this presentation and the documentation enclosed (including texts, pictures, graphics, animations etc.) unless expressly indicated otherwise. It is not permitted to use, copy or alter the content of this presentation for private or commercial purposes without explicit consent of Fronius.