

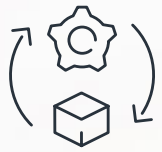


iSeamer



iSeamer

More power. More precision.



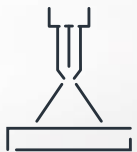
Integrated platform

The perfect combination of robust machine design, innovative welding technology, and state-of-the-art system control



Intelligent control

Simplified process control with the new POLARIS control generation



Multi-process capable

Supports all relevant longitudinal seam welding processes

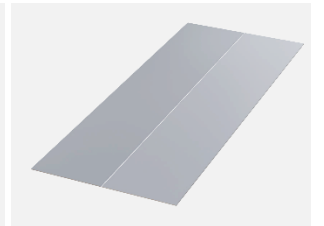
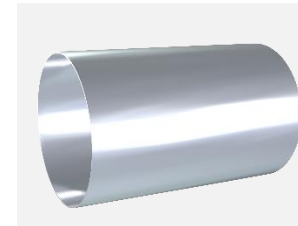




Application areas

Industries:

Pipe and tank construction, machine and apparatus engineering, food, chemical, and pharmaceutical industries, etc.



Component sizes:



80 - 1100 mm



max. 4100 mm



0,5 - 15 mm

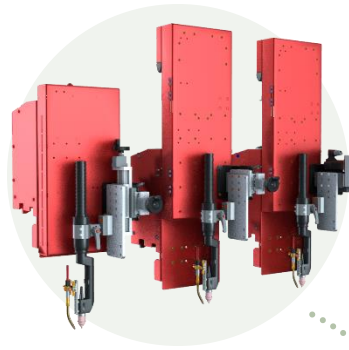
Base materials:

Steel, stainless steel, aluminum, duplex, nickel-based

Multiple applications



Modular system design



Welding head

- Pneumatic or motorized lowering
- Manual or motorized torch adjustment
- AVC / OSC function (optional)

Welding processes



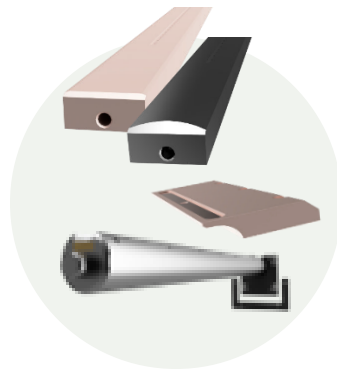
Polaris system controller

- Terminal TC20
- Mobile Panel MC10
- Remote control RC7

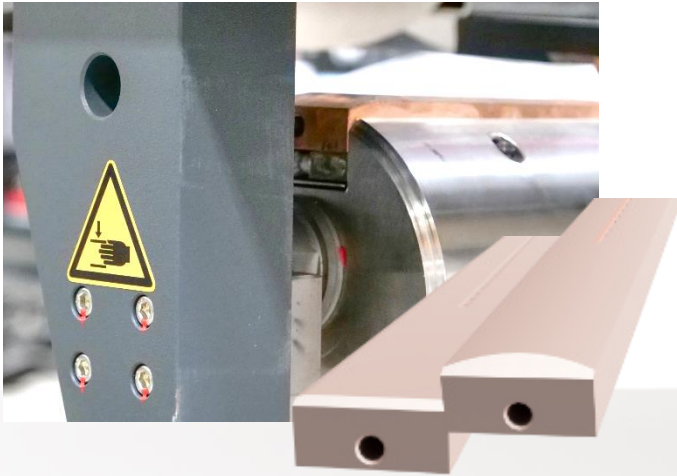


Clamping fingers, Backing track, Mandrel

Available in different designs
and materials



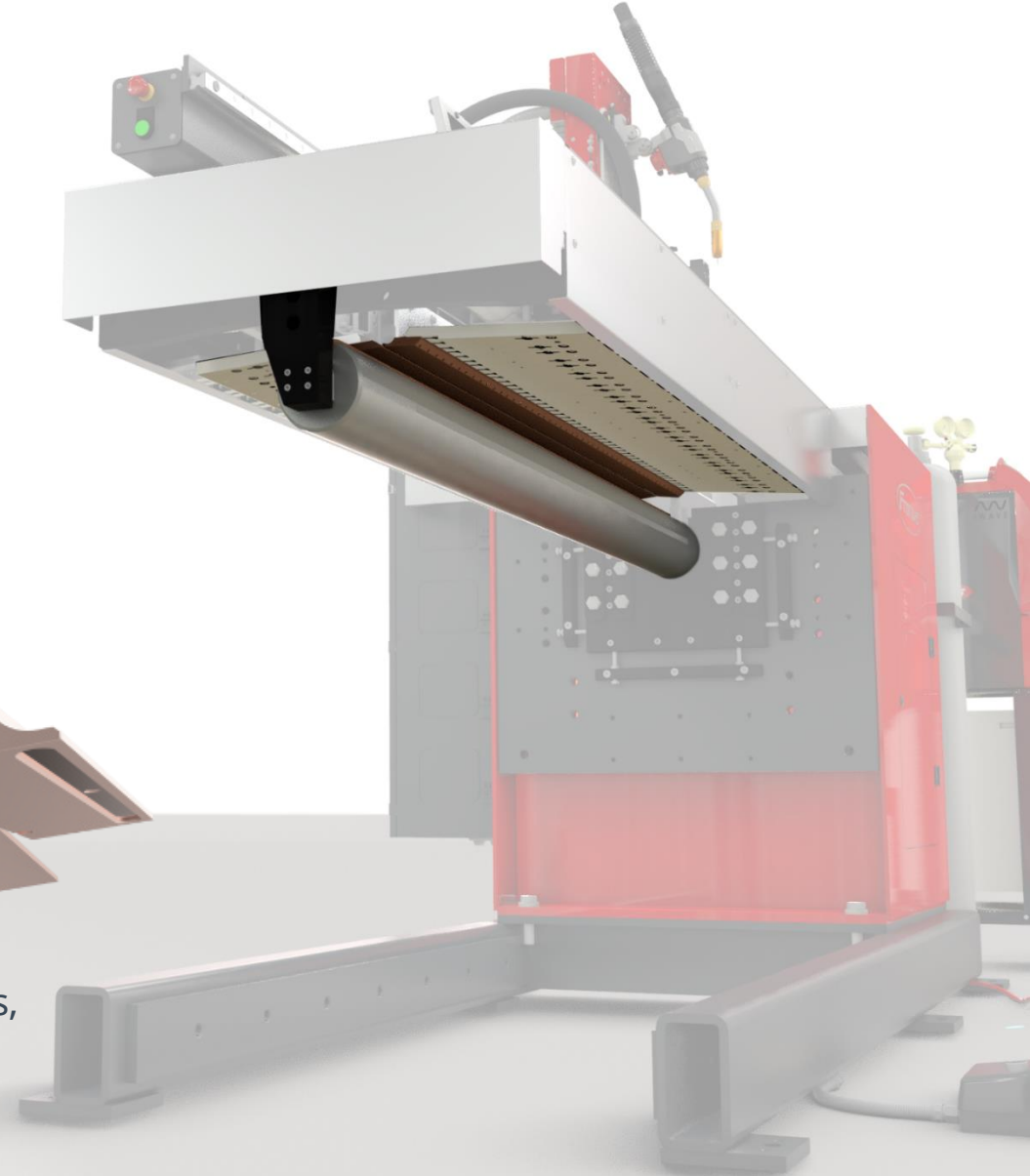
Flexible Clamping system



Replaceable backing track
in various geometries and materials,
e.g.: CrNi, CU



Clamping fingers
in various geometries and materials,
e.g.: CrNi, CU

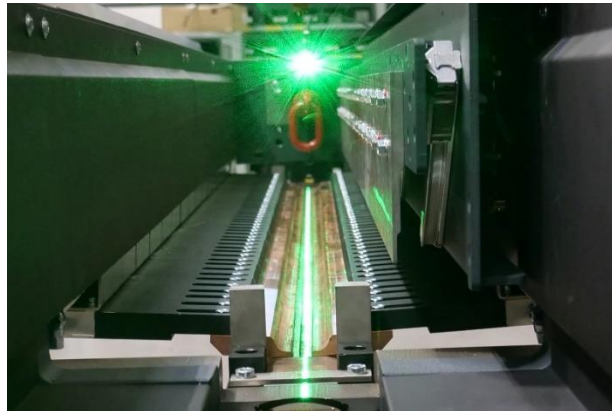


Easy positioning



Center stop

- Precise insertion of the workpiece

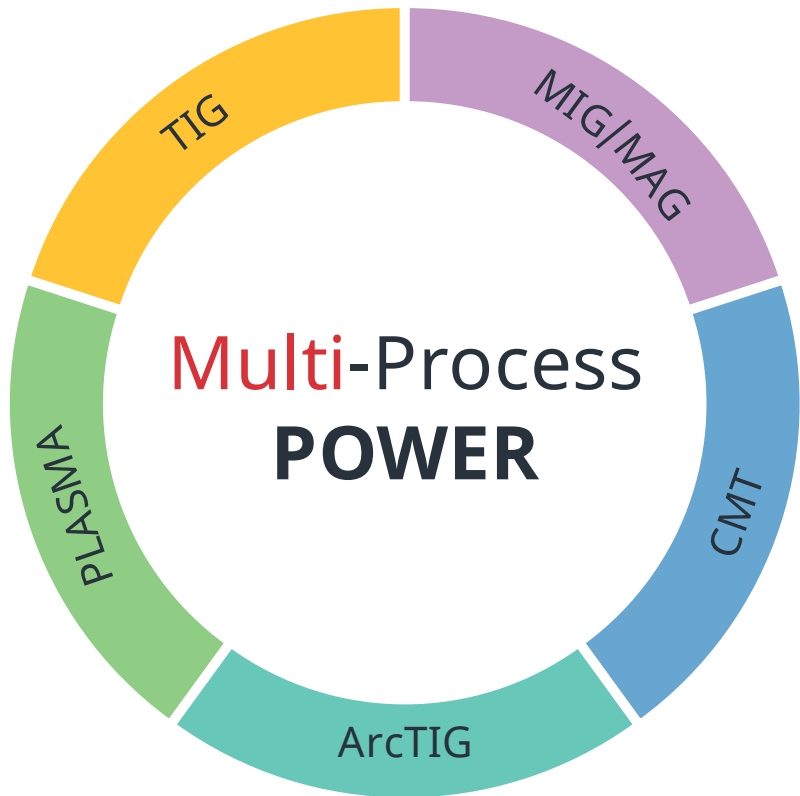


Linear-laser

- Ideal for setting up pre-tacked workpieces



For every application the ideal process





Polaris



Next-generation
system control

- 10" mobile panel or 21" terminal with multi-touch
- Full access to power source parameters
- Easy programming via drag & drop
- Perfect quality management due to welding data recording

Polaris ✨

Everything at a glance

The dashboard provides a quick overview of:

- Status of the welding station
- Remaining welding time
- Current process data in real time



Polaris ✨

Sequence programming made easy

- Library with ready-made modules and templates
- Easy drag & drop



Polaris ✨

Direct access to welding parameters

Access all welding parameters directly on the Polaris control panel. All settings are synchronized with the welding power source in real time.



Polaris ✨

Guided program sequence

Visual assistance as support during program execution



Polaris ✨

Process data in real time

- Visual display of all relevant welding process data in real time
- Direct adjustment option



Polaris ✨

Record welding data

The integrated data recording function provides a detailed analysis of the welding process. Ideal for quality assurance.



Options & Accessories

Options / Accessories

Control units



Terminal TC20

- 21" Multi-touch screen
- Windows 10 operating system
- Optionally with RC7 remote control
- Connecting cable 5m



Remote control panel RC7 (only for Terminal TC20)

- 7" Multi-touch-screen
- Connecting cable 20m



Mobile Panel MC10

- 10" Multitouch-Screen
- Windows 10 operating system
- Optionally with stand and Control board for Start, Stop, Error-Reset
- Connecting cable 10m



Control board

- Individually assignable functions

Options / Accessories



ArcView3 Camera

- Available in 2026



Linear laser

- Positioning aid for pre-attached parts



Adjustable LED lamp



2nd Foot switch

- e.g.: for Clamp / unclamp on the opposite side of the machine



OPT/i external gas control



Welding fume extraction



All information is without guarantee in spite of careful editing – liability excluded.

Intellectual property and copyright: all rights reserved.
Copyright law and other laws protecting intellectual property apply to the content of this presentation and the documentation enclosed (including texts, pictures, graphics, animations etc.) unless expressly indicated otherwise. It is not permitted to use, copy or alter the content of this presentation for private or commercial purposes without explicit consent of Fronius.