

TTG / TTW Manual welding torches Round Handle



TTG RH / TTW RH

TIG Torch Round Handle

Welding torch with **fixed torch body**
in **rigid** and **flexible** design

Optional, external UpDown user interface
(can be mounted on the handle)
with **TMC** control cable connector



Flexible hose pack
With F / F++ connection

Standard P wear parts

Round, straight handle
without operation



Variants

gascooled



TTG 135P



TTG 180P



Diameter handle
shell: 25mm



Diameter handle
shell: 30mm

watercooled



TTW 225P



TTW 380P

RC Bar UD

- Optional, external UpDown user interface
- can be mounted on the handle
- with TMC control cable connector



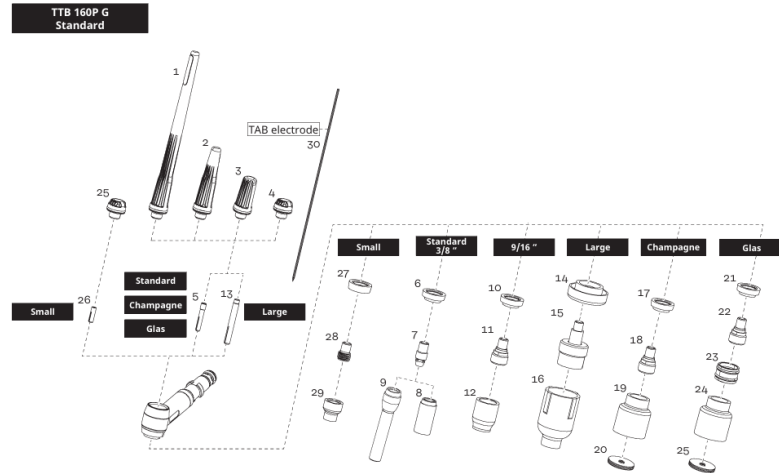
TTW 225P with RC Bar



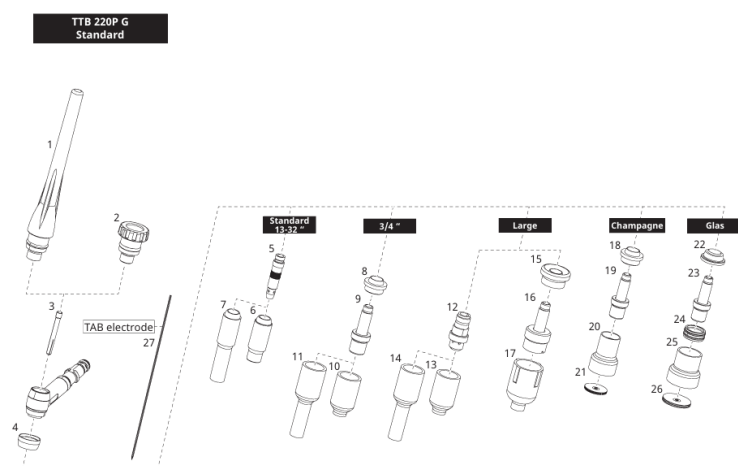
TTG 180P with RC Bar

Wear parts

TTB 160P G ML / TTB 300P W ML WEAR PARTS



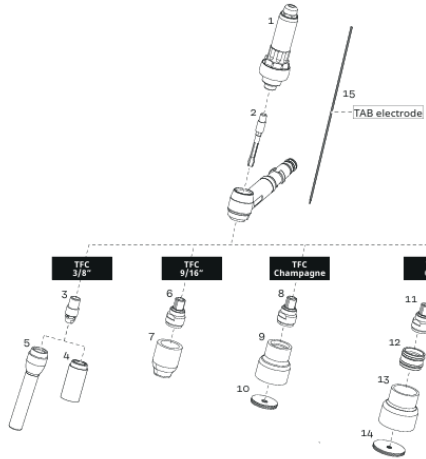
TTB 220P ML G / TTB 400P W ML WEAR PARTS



- TTG 135P and TTW 225P
- Same wear parts as TTB 160P G ML / TTB 300P W ML
- TTG 180P and TTW 380P
- Same wearing parts as TTB 220P ML G / TTB 400P W ML
- Welding torches are equipped for **electrode diameters of 2.4 mm** as standard

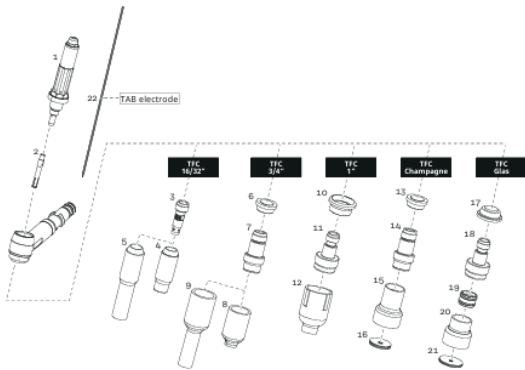
Wear parts TFC

TTB 160P / TTB 300P TFC WEAR PARTS




- **TTG 135P and TTW 225P**
- TFC wear parts from TTB 160P G ML / TTB 300P W ML are compatible

TTB 220P / TTB 400P TFC WEAR PARTS



- **TTG 180P and TTW 380P**
- TFC wear parts from the TTB 220P ML G / TTB 400P W ML are compatible

Technical data, variants and article numbers

Variants	Technical data	Welding torch lengths	Article number	Article description	Wear parts
Gas-cooled TTG 135P	DC: 135A 35% ED	4m, 8m	4,036,506 4,036,508 4,036,507 4,036,509	TTG 135P F/RH/4m TTG 135P F F/RH/4m TTG 135P F/RH/8m TTG 135P F F/RH/8m	Same wearing parts as TTB 160P G ML / TTB 300P W ML
TTG 180P	DC: 180A 35% ED	4m, 8m	4,036,510 4,036,512 4,036,511 4,036,513	TTG 180P F/RH/4m TTG 180P F F/RH/4m TTG 180P F/RH/8m TTG 180P F F/RH/8m	Same wearing parts as TTB 220P ML G / TTB 400P W ML
Water-cooled TTW 225P	DC: 225A 60% ED	4m, 8m	4,036,514 4,036,516 4,036,515 4,036,517	TTW 225P F++/RH/4m TTW 225P F F++/RH/4m TTW 225P F++/RH/8m TTW 225P F F++/RH/8m	Same wearing parts as TTB 160P G ML / TTB 300P W ML
TTW 380P	DC: 380A 60% ED	4m, 8m	4,036,518 4,036,520 4,036,519 4,036,521	TTW 380P F++/RH/4m TTW 380P F F++/RH/4m TTW 380P F++/RH/8m TTW 380P F F++/RH/8m	Same wearing parts as TTB 220P ML G / TTB 400P W ML
RC Bar UD		4m, 8m	4,046,058 4,046,059	RC Bar UD TIG/TMC/4m RC Bar UD TIG/TMC/8m	



All information is without guarantee in spite of careful editing – liability excluded.

Intellectual property and copyright: all rights reserved.
Copyright law and other laws protecting intellectual property apply to the content of this presentation and the documentation enclosed (including texts, pictures, graphics, animations etc.) unless expressly indicated otherwise. It is not permitted to use, copy or alter the content of this presentation for private or commercial purposes without explicit consent of Fronius.