

Easy Documentation

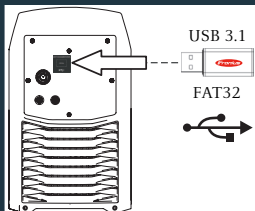
Activating / deactivating Easy Documentation



Safety

Before working with the device, ensure that you have read and understood all the documents provided in hard copy and online. This document does not describe all the functions of the device. For a complete description of the device, refer to the Operating Instructions.

Activating Easy Documentation



Plug in the supplied Fronius USB thumb drive with FAT32 formatting. If the power source is switched off and on again while the USB thumb drive is connected, Easy Documentation remains activated.

Display shows:



Easy Documentation is activated.

Deactivating Easy Documentation

Unplug the USB thumb drive

Display shows:



Easy Documentation is deactivated.

Checking the date and time

To document the welding data, the date and time must be set correctly. Checking/setting the date and time is carried out in the 2nd level of the serWu (see back page).

The data from all welds are stored on the USB thumb drive as a CSV file with Fronius signature.

Further information

Documented parameters / service codes:

See the Operating Instructions of the power source

New CSV file:

- A new CSV file is generated
- when the USB thumb drive is disconnected and reconnected,
- when the date and time are changed,
- from 1000 welds.

PDF report / Fronius signature:

- By scanning this link (<https://easydocu.weldcube.com>) ...
- a PDF report of the selected welding data can be created,
 - the authenticity of the welding data can be checked and guaranteed via the Fronius signature read out with the welding data.



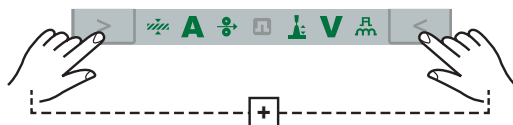
Easy Documentation

Service menu

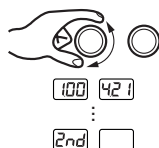
Setting the date and time

Entering service menu level 2:

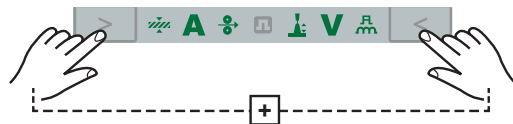
1



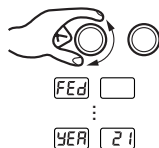
2



3

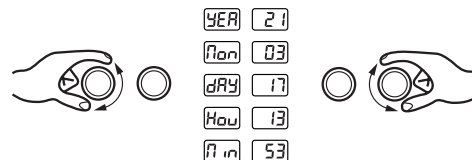


4



Setting the date and time:

5



Left-hand selection dial:
select parameters

Right-hand selection dial:
change values

Setting ranges:

YER	Year	0 - 999
Mon	Month	1 - 12
dAY	Day	1 - 31
Hour	Hour	0 - 24
Min	Minute	0 - 59



Operating Instructions



<https://fronius.com/transsteel>