

Access the Setup menu

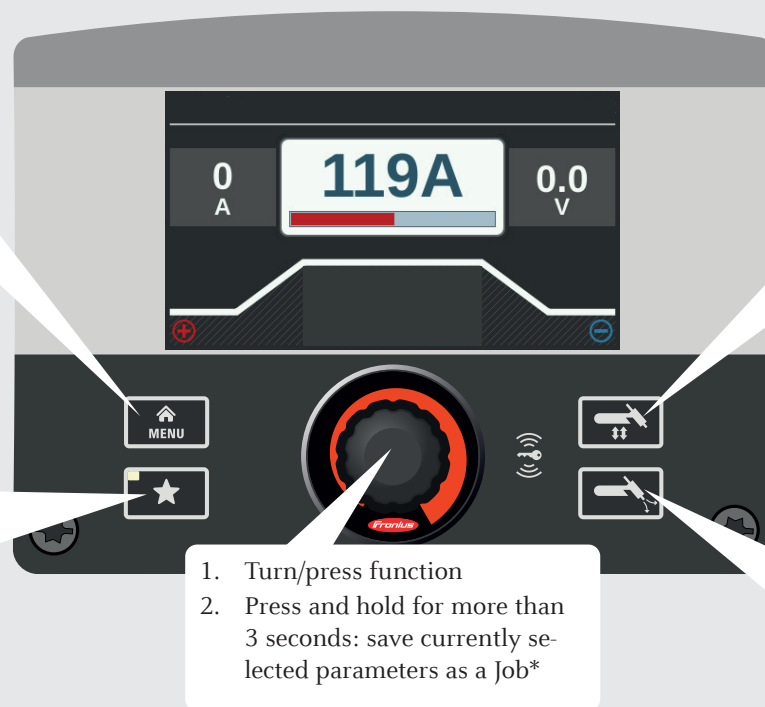
1. Press and hold for more than 3 seconds: save currently selected parameters / menu item as a favorite
2. Press once: retrieve favorite (factory setting)
3. Press once: retrieve EasyJob*

Select the welding process and operating mode

1. Turn/press function
2. Press and hold for more than 3 seconds: save currently selected parameters as a Job*

Let gas flow out for 30 seconds

* Prerequisite: the "Job" function package is enabled



Access the Setup menu

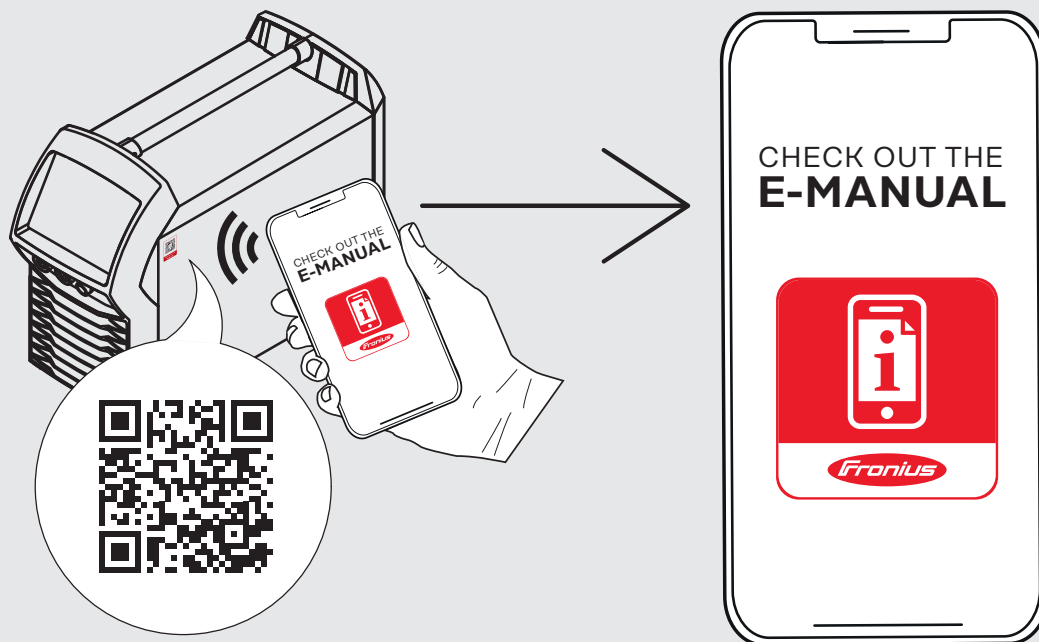
1. Press and hold for more than 3 seconds: save currently selected parameters / menu item as a favorite
2. Press once: retrieve favorite (factory setting)
3. Press once: retrieve EasyJob*

Select the welding process and operating mode

1. Turn/press function
2. Press and hold for more than 3 seconds: save currently selected parameters as a Job*

Let gas flow out for 30 seconds

* Prerequisite: the "Job" function package is enabled



SAFETY

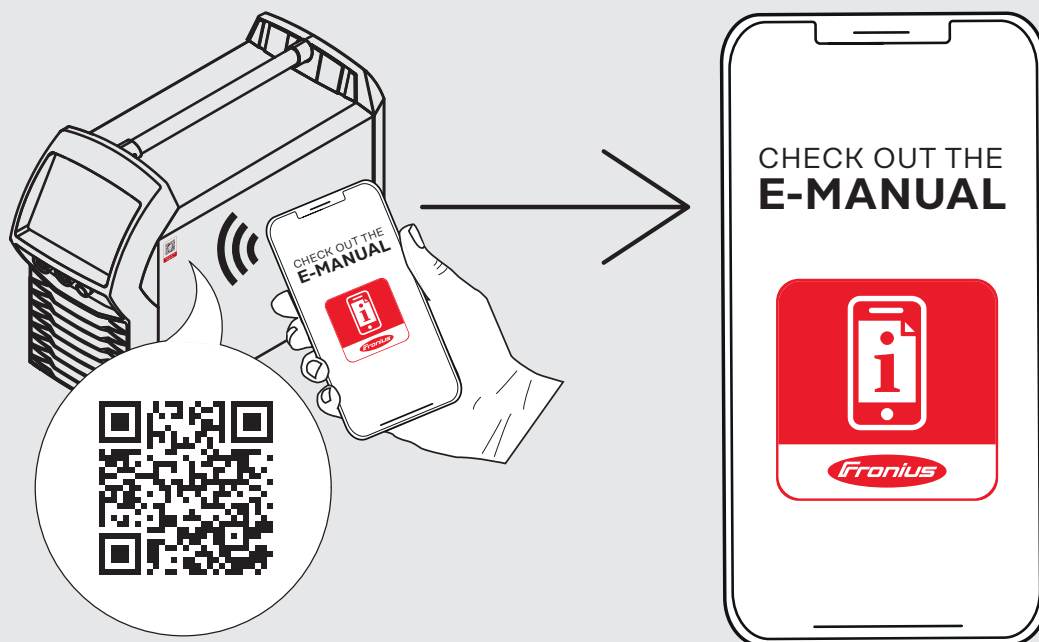
Before working with the device, ensure that you have read and understood all the documents provided in hard copy and online.

This document does not describe all the functions of the device. For a complete description of the device, refer to the Operating Instructions.



42,0426,0235,EA

005-19012022



SAFETY

Before working with the device, ensure that you have read and understood all the documents provided in hard copy and online.

This document does not describe all the functions of the device. For a complete description of the device, refer to the Operating Instructions.



42,0426,0235,EA

005-19012022