

## ADDITIONAL ITEMS

Simple commissioning, flexible retrofitting and rapid maintenance are essential to ensure high yields over a long period of time. This is guaranteed by smart accessories and retrofit kits with which Tauro Commercial inverters can be retrofitted and serviced on site at short notice.

### Accessories for easy commissioning and security

The following accessories enable easy installation and commissioning and also ensure the necessary safety. All accessories can also be kept on stock.

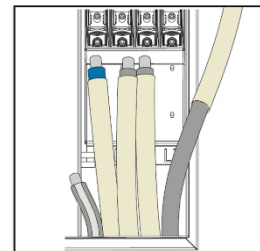
#### Floor racks for floor-mount (4,251,038)

With this accessory, the Fronius Tauro can be installed flat on the floor.



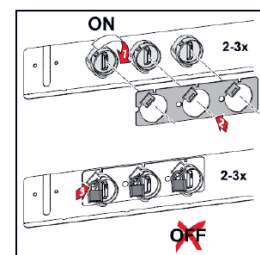
#### Protective Hoses (4,251,050)

Under certain circumstances, the temperature in the AC connection area can reach up to 90 ° C. If cables are used that cannot withstand this temperature, this protective hoses can be placed over the phases and the neutral conductor in order to offer additional protection.



#### Locking-Sheet (4,251,041)

With this option, the DC isolator can be locked during operation. This is a mandatory step in some markets (e.g. Australia).



### Items for conversions or retrofits

Simple conversion and retrofit kits provide the necessary flexibility if project conditions change spontaneously. The following items can be retrofitted on site by any installer and / or stored as spare parts. We recommend our wholesalers to keep these items on stock.

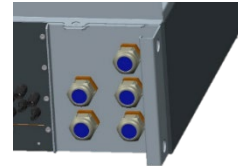
#### AC Connection Mult-Core RF (4,240,328,CK)

Fronius Tauro or Fronius Tauro ECO devices with a built-in single-core option can be converted to multi-core by the installer on site. For devices with built-up AC daisy chaining a retrofitting is not possible.



#### AC Connection Single-Core RF (4,240,329,CK)

Fronius Tauro or Fronius Tauro ECO devices with a built-in multi-core option can be converted to single-core by the installer on site. For devices with built-up AC daisy chaining a retrofitting is not possible.



#### **ATTENTION:**

*/ AC isolators cannot be retrofitted manually!*

*/ The AC Daisy Chaining option cannot be retrofitted manually!*

*/ Fronius Tauro devices with AC Daisy Chaining Option cannot be changed to multi-core or single-core*



## AC- & DC overvoltage protection – SPD



### SPD Type 1+2 ECO Retrofit (4,240,333,CK)

AC and DC overvoltage protection type 1 + 2 for Tauro ECO devices (50, 99 and 100 kW). Ideal for retrofitting or as a spare part.

### SPD Type 1+2 Retrofit (4,240,334,CK)

AC and DC overvoltage protection type 1 + 2 for Fronius Tauro devices (50kW). Ideal for retrofitting or as a spare part.

### SPD Type 2 ECO Retrofit (4,240,331,CK)

AC and DC overvoltage protection type 2 for Tauro ECO devices (50, 99 and 100 kW). Ideal for retrofitting or as a spare part.

### SPD Type 2 Retrofit (4,240,332,CK)

AC and DC overvoltage protection type 2 for Fronius Tauro devices (50kW). Ideal for retrofitting or as a spare part.

## Spare parts for repairs

The following items can be put on stock by any installer for repairs. The spare parts can be exchanged on site. We recommend storing the following items, all other spare parts can be ordered as usual if required.

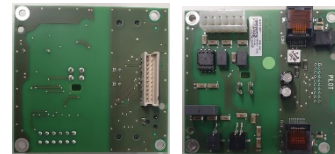
### Data communication board (43,0001,3553,Z)

The data communication board (pilot) can be exchanged on site by any installer.



### Application board for data communication board (4,071,667,Z)

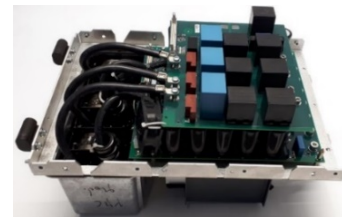
The Fronius data communication board (pilot) is connected to an application board. This PC board can be exchanged on site by any installer.



### AC power unit (43,0001,0042,Z)

The AC power unit for Fronius Tauro and Fronius Tauro ECO can be exchanged quickly and easily by just one installer on site.

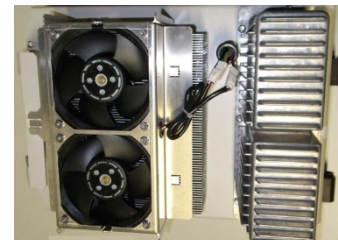
Weight: around 25kg



### DC power unit (44,0240,0000,Z)

The DC power unit of the Fronius Tauro booster unit can be exchanged quickly and easily by just one installer on site.

Weight: around 17kg



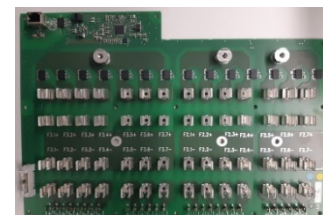
### Control board (4,071,609,Z)

This PC board can be exchanged on site by any installer.



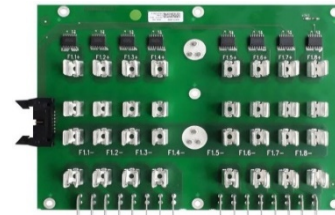
### Fuse board 50 kW (4,071,506,Z)

This fuse board is used in Fronius Tauro and Fronius Tauro ECO 50-D. This board can be exchanged by any installer on site.



**Fuse board extension 100 kW (4,071,509,Z)**

This fuse board is only used with Fronius Tauro Eco 100-D and Fronius Tauro Eco 99-D. This PC board can be exchanged on site by any installer.



**AC and DC SPD (article number depends on Tauro device type)**

These AC and DC surge protection devices can be exchanged on-site by any installer, regardless of the type. The article number to be ordered depends on the device.



- Type 1+2 for Tauro ECO: 4,240,333,CK
- Type 2 for Tauro ECO: 4,240,331,CK
- Type 1+2 for Tauro: 4,240,334,CK
- Type 2 for Tauro: 4,240,332,CK

**External fan for AC and DC power unit (43,0006,0000)**

The fans can be exchanged directly on site by any installer and they are used for both AC and DC power units.



For more information on spare parts, we recommend our spare part catalog:  
<https://spareparts.fronius.com/index.php/m/catalogSelection/index>.