

## Spare parts list

Simple commissioning, flexible retrofitting and rapid maintenance are essential to ensure high yields over a long period of time. This is guaranteed by smart accessories and retrofit kits that can be used to retrofit and service Tauro Commercial inverters on site at short notice.

### 1. Accessories for easy commissioning and security

The following accessory items enable easy assembly and commissioning and ensure the necessary safety on the device. All items can be placed in stock.

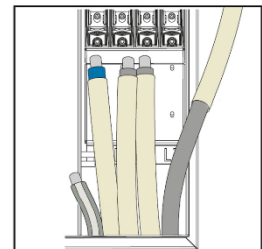
#### 1.1. Floor racks for floor mount (4,251,038)

This accessory enables the Fronius Tauro to be installed on the floor. Includes an additional cover for the DC connection area.



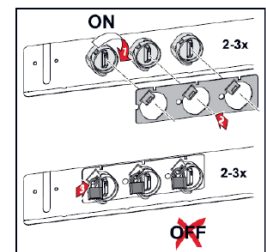
#### 1.2. Protective hoses (4,251,050)

The temperature in the AC connection area can reach up to 90 °C in certain circumstances. If cables that cannot withstand this temperature are used, these protective hoses can be placed over the phases and the neutral conductor to offer additional protection.



#### 1.3. Locking sheet (4,251,041)

This option enables the DC isolator to be locked during operation. This is a mandatory step in some markets (e.g. Australia).



## 2. Items for conversions or retrofits

Simple conversion and retrofit kits provide the necessary flexibility if project conditions change spontaneously. The following items can be retrofitted on site by any installer and/or stored as spare parts. We recommend that our wholesalers keep these items on stock.

### 2.1. AC Connection Multi-Core RF (4,240,328,CK)

Fronius Tauro or Fronius Tauro ECO devices with a built-in single-core option can be converted to multi-core by the installer on site. Devices with AC daisy chaining cannot be retrofitted.



### 2.2. AC Connection Single-Core RF (4,240,329,CK)

Fronius Tauro or Fronius Tauro ECO devices with a built-in multi-core option can be converted to single-core by the installer on site. Devices with AC daisy chaining cannot be retrofitted.



Important:

/ AC isolators cannot be retrofitted manually!

/ The AC daisy chaining option cannot be retrofitted manually!

/ Fronius Tauro devices with the AC daisy chaining option cannot be changed to multi-core or single-core

## AC & DC overvoltage protection – SPD (includes a set of SPD replacement cartridges)



### 2.3. SPD Typ 1+2 ECO Retrofit (4,240,333,CK)

AC and DC overvoltage protection type 1 + 2 for Tauro ECO devices (50, 99 and 100 kW). Ideal for retrofitting or as a spare part.

### 2.4. SPD Typ 1+2 Retrofit (4,240,334,CK)

AC and DC overvoltage protection type 1 + 2 for Fronius Tauro devices (50kW). Ideal for retrofitting or as a spare part.

### 2.5. SPD Typ 2 ECO Retrofit (4,240,331,CK)

AC and DC overvoltage protection type 2 for Tauro ECO devices (50, 99 and 100 kW). Ideal for retrofitting or as a spare part.

### 2.6. SPD Typ 2 Retrofit (4,240,332,CK)

AC and DC overvoltage protection type 2 for Fronius Tauro devices (50kW). Ideal for retrofitting or as a spare part.

### 3. Spare parts for repairs

The following items can be stocked by any installer for repairs. The spare parts can be exchanged on site. We recommend keeping the following items on hand; all other spare parts can be ordered as usual if required.

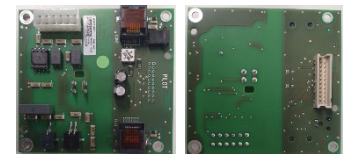
#### 3.1. Data communication board (43,0001,3553,Z)

The Fronius data communication board (pilot) is connected to the application board data communication board.



#### 3.2. Application board for data communication board (4,071,667,Z)

The Fronius data communication board (pilot) is connected to an application board.



#### 3.3. TAPSI (4,071,720,Z)

The TAPSI is required for the Fronius Tauro ECO 100 and 99 with AFCI. The data communication circuit board (pilot) is connected to the TAPSI.

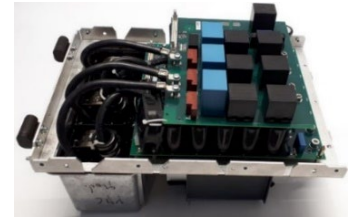
#### 3.4. TAPSI-L (4,071,739,Z)

The TAPSI-L is required for the Fronius Tauro 50 and Fronius Tauro ECO 50 with AFCI. The data communication circuit board (pilot) is connected to the TAPSI-L.

### 3.5. AC power unit (43,0001,0042,Z)

The AC power unit for Fronius Tauro and Fronius Tauro ECO can be exchanged quickly and easily by just one installer on site.

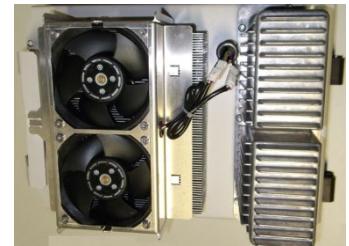
Weight: around 25 kg



### 3.6. DC power unit (44,0240,0000,Z)

The DC power unit of the Fronius Tauro booster unit can be exchanged quickly and easily by just one installer on site.

Weight: around 17 kg



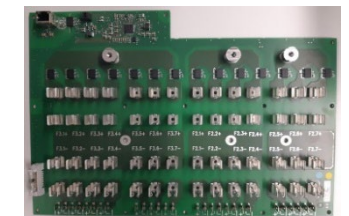
### 3.7. Control board (4,071,807,Z)

This PC board can be exchanged on site by any installer.



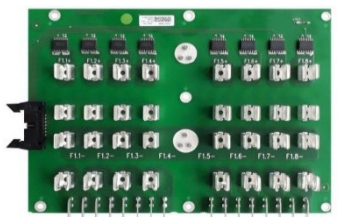
### 3.8. Fuse board 50 kW – 20 A option (4,071,506,Z)

This fuse board is used in Fronius Tauro and Fronius Tauro ECO 50-D. This board can be exchanged by any installer on site.



### 3.9. Fuse board extension 100 kW – 20 A option (4,071,509,Z)

This fuse board is only used with Fronius Tauro Eco 100-D and Fronius Tauro Eco 99-D. This PC board can be exchanged on site by any installer.



### 3.10. Fuse board – 30 A option (4,071,750,Z)

This fuse board is only used with Fronius Tauro 50-3-D, Fronius Tauro ECO 50-3-D, Fronius Tauro Eco 99-3-D and Fronius Tauro Eco 100-3-D, each with the 30 A option.

### 3.11. AC and DC SPD (includes a set of SPD replacement cartridges)

The article number to be ordered depends on the device. See page 2 for the correct article number.



### 3.12. External fan for AC and DC power unit (43,0006,0000)

It is also possible to replace only the external fans on the power section.



For more information on spare parts, we recommend our spare part catalog:

Click [here](#).